

# Dornbracht Foot Bath

## Manual

18	Rotary knob	22	Volume adjustment
20	On/Off	17	Display button
22	Volume adjustment	16	Safety information
23	Temperature adjustment	17	Logic controls
24	Electronic pop-up waste and overflow set	17	Display button
26	Starting a scenario	18	Rotary knob
27	Automatic filling	19	Functions
27	Starting a comfort function	20	On/Off
11	General information	22	Volume adjustment
27	Cleaning	23	Temperature adjustment
28	Service display	24	Electronic pop-up waste and overflow set
28	Waiting display	25	Scenarios
29	Maintenance	26	Starting a scenario
29	Safety deactivation	27	Comfort Functions
29	Disposal	27	Automatic filling

27 Starting a comfort function

27 Cleaning

28 Service display

28 Waiting display

29 Maintenance

29 Safety deactivation

29 Disposal

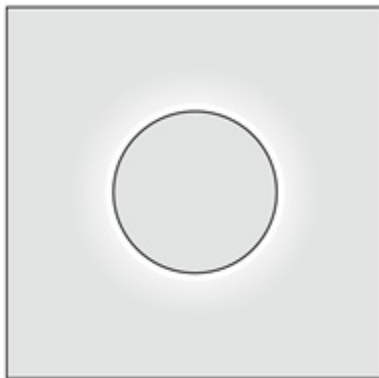
Please read this operating manual in full before using the FOOT BATH for the first time.  
Other language versions are available on the Internet at:



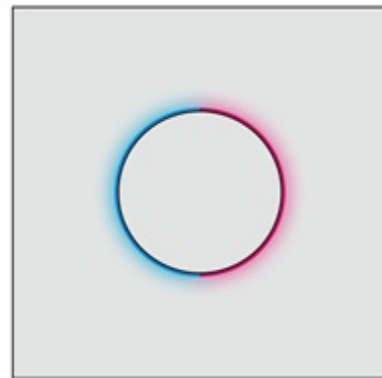
[dornbracht.com/foot-bath](http://dornbracht.com/foot-bath)

## Rotary knob

Volume



Temperature

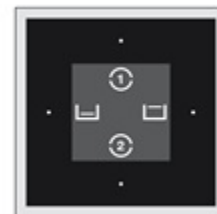


The Foot BathATT has an automatic sleep mode. The system can be woken up and made ready for use by pressing or turning any control element. If it is not used for 60 minutes, the System will return to automatic sleep mode. The pre-defined water volume is 80%, the pre-defined temperature 38°C. Individual settings are saved for five minutes after the water has been switched off.

Ready 1



Ready 2

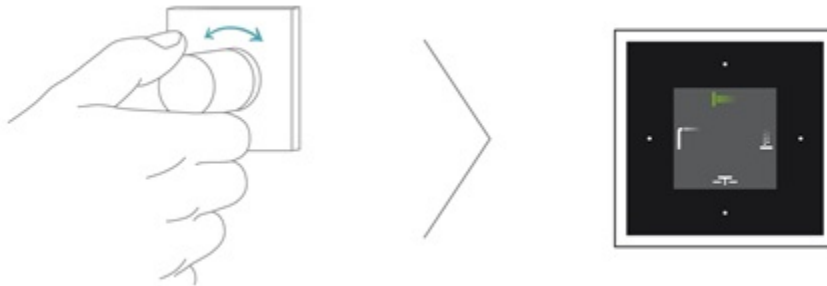


Sleep mode



## On/Off

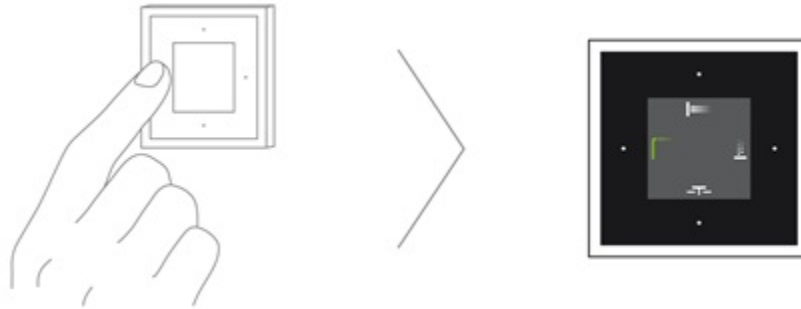
using rotary knob



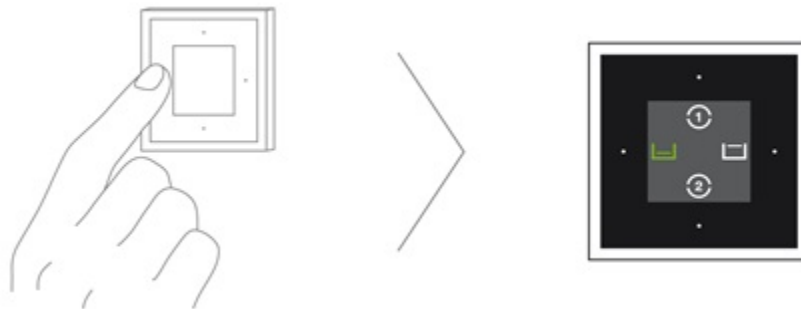
using rotary knob



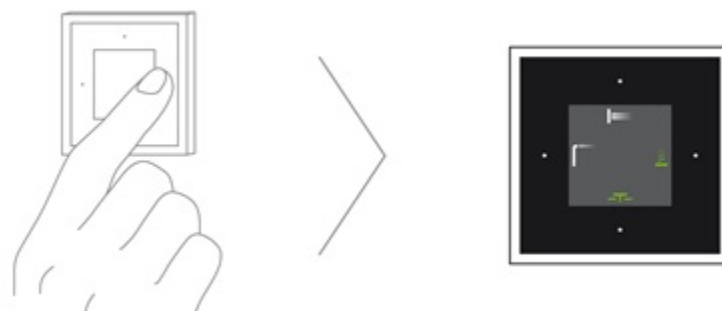
using display button



using display button

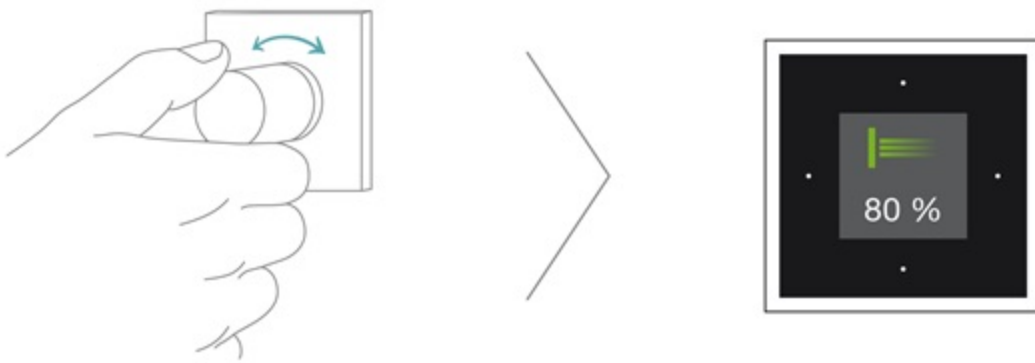


Jet activation



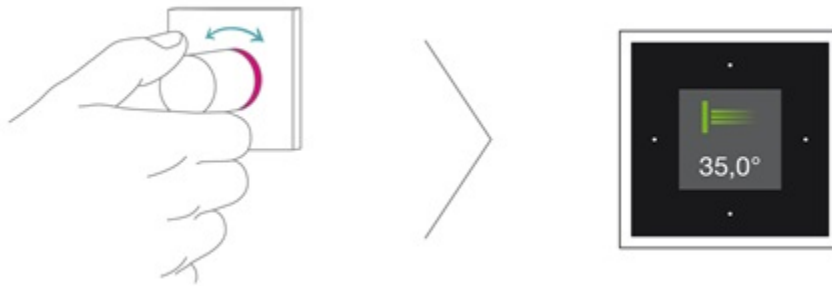
If the jets are activated manually, the strainer waste will first close and water will be let in automatically. As soon as an adequate water level has been reached, the water flow will stop and the jets will start. You can stop the jets by pressing the button a second time.

## Volume adjustment





## Temperature adjustment



## Disable scalding protection system



1 = turn to max

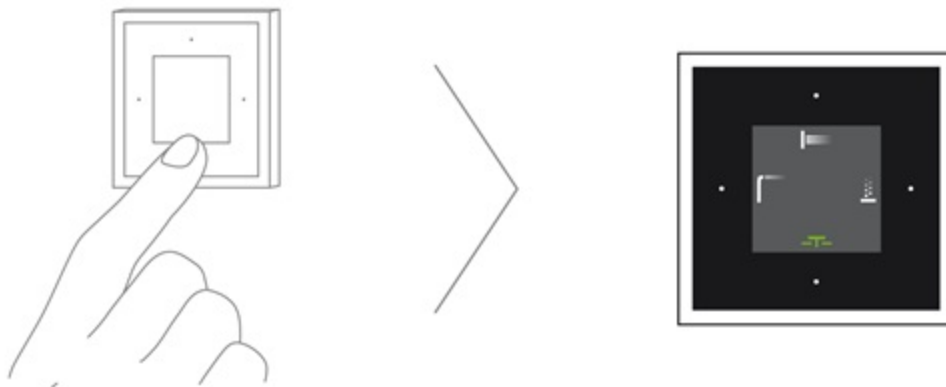
2= push + turn at the same time



The scald protection system will be re-enabled after 10 minutes.

## Electronic pop-up waste and overflow set

Close / Open



You can choose between two automatic scenarios:


### 1 Relax

The RELAX scenario stimulates your circulation, while relaxing and warming you. Your feet will initially be dipped in lukewarm, shallow water after which the temperature and water level will rise slowly until, after 15 relaxing minutes, you leave the foot bath, dry your legs and ideally spend a further 10 minutes lying down and relaxing.

### 2 Vitalize

The VITALIZE scenario relieves stress, while also refreshing and stimulating you. Your feet are initially dipped into warm, shallow water after which the four jets start to massage your reflex zones with increasing pressure intensity and fluctuating temperatures. Gradually, a stimulating feeling will flow through your whole body and will remain long after you finish your foot bath. This scenario lasts 5 minutes.

## Starting a scenario

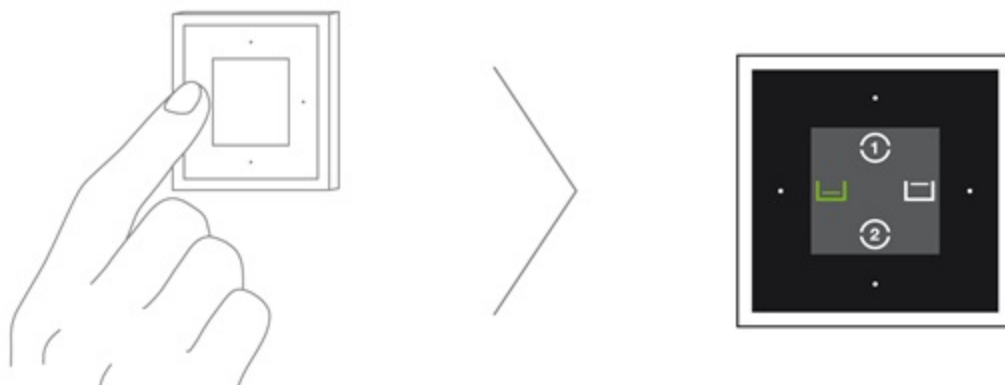
 During a scenario temperature may be changed by +/- 2°C and water volume by +/- 20%. Pressing any rotary knob or display button enables you to terminate a scenario prematurely.



## Automatic filling

The comfort functions enable you to fill the bath automatically up to a preset depth, either up to your ankles or calves. The default temperature is 38°C.

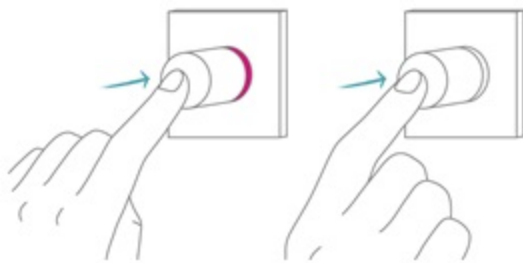
## Starting a comfort function



# General information

## Cleaning

Key lock

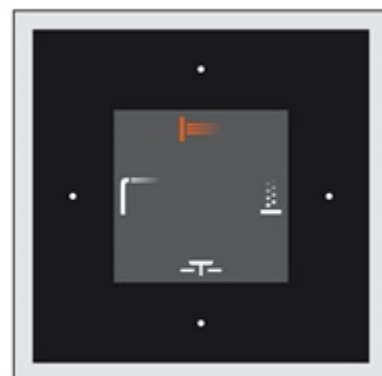


5 sec.



## Service display

If one of the symbols is lit in red for 2 seconds, contact your dealer or the Dornbracht Service Department.



## Waiting display

If a function has been selected but is not yet ready (e.g. the set temperature), the appropriate symbol will flash. It will stop flashing as soon as the function is ready for use.



## Maintenance

We recommend that you have all the components inspected and serviced by your plumber once per year. This maintenance will also include cleaning, checking for leaks, checking the functions and uploading the latest software version. A maintenance contract with an authorised plumber will ensure that your system is inspected regularly.

## Safety deactivation

A safety deactivation system ensures that all active functions are switched off automatically after 30 minutes at the most.

## Disposal

All electronic elements are marked in compliance with European Directive 2002/96/EC on Waste Electrical and Electronic Equipment (WEEE). This Directive provides the framework for the return and recycling of end of life products throughout the EU. In addition to valuable recyclable materials, end of life electrical and electronic appliances also contain harmful substances. These can be harmful to human health and the environment if they are disposed of in the residual non-recyclable waste or if they are not treated correctly. You should therefore never dispose of your waste appliance as non-recyclable waste. Instead, use the collection point established by your local authority to return and recycle electrical and electronic waste. Ensure that you comply with the current regulations in this respect. You must also comply with other national regulations which apply.



Type: Foot Bath

Power consumption: max. 60 W

Nominal voltage: 100 - 240V ~ 50 - 60 Hz

Nominal current: 1,5 A

Protection (control elements): IP X4

Protection (Motherboard and eValve): IP X4



Aloys F. Dornbracht GmbH & Co. KG Armaturenfabrik

Köbbingser Mühle 6, D-58640 Iserlohn

Telefon +49(0)2371 433-0, Fax +49(0)2371 433-232

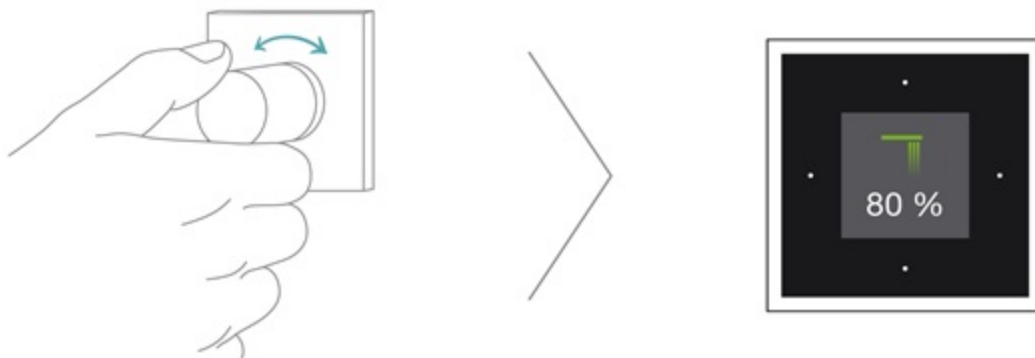
mail@dornbracht.de, dornbracht.com

**Dornbracht Group**

Premium Solutions for Interior Architecture

## Volume adjustment

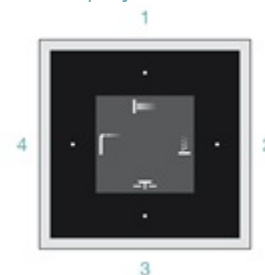
Volume



## Display button

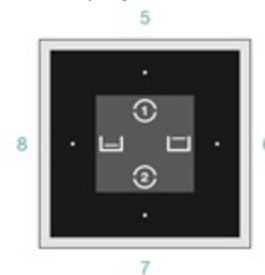
- 1 = WaterFall On / Off
- 2 = Jets On / Off
- 3 = Electronic pop-up waste and overflow set
- 4 = Affusion pipe On / Off

Display button 1



- 5 = Scenario Relax On / Off
- 6 = Fill calf deep On / Off
- 7 = Scenario Vitalize On / Off
- 8 = Fill ankle deep On / Off

Display button 2





## Safety information

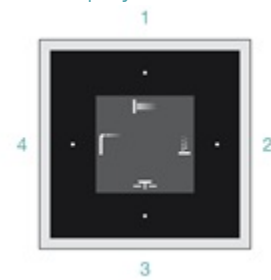
The Foot BathATT can be used by children of 8 years old and over, and also by persons with restricted physical, sensory or mental capacity or lack of experience and knowledge, if they are supervised or have been instructed on safe use of the appliance and understand the resulting risks. Children must not be allowed to play with the appliance. Cleaning and maintenance must not be carried out by children without supervision.

# Logic controls

## Display button

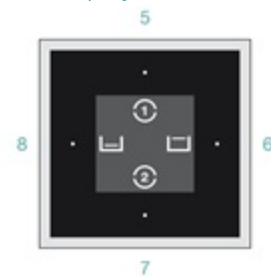
- 1 = WaterFall On / Off
- 2 = Jets On / Off
- 3 = Electronic pop-up waste and overflow set
- 4 = Affusion pipe On / Off

Display button 1



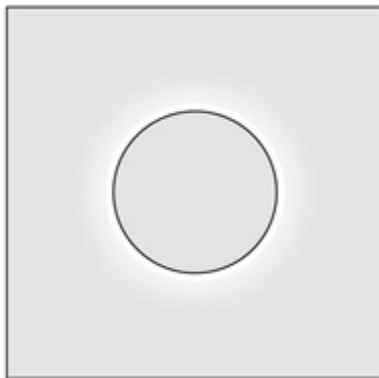
- 5 = Scenario Relax On / Off
- 6 = Fill calf deep On / Off
- 7 = Scenario Vitalize On / Off
- 8 = Fill ankle deep On / Off

Display button 2

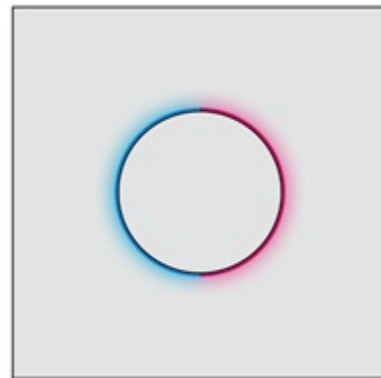


## Rotary knob

Volume



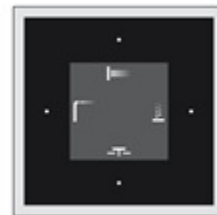
Temperature



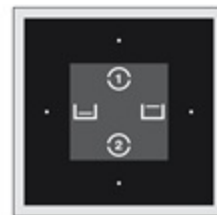
# Functions

The Foot BathATT has an automatic sleep mode. The system can be woken up and made ready for use by pressing or turning any control element. If it is not used for 60 minutes, the System will return to automatic sleep mode. The pre-defined water volume is 80%, the pre-defined temperature 38°C. Individual settings are saved for five minutes after the water has been switched off.

Ready 1



Ready 2

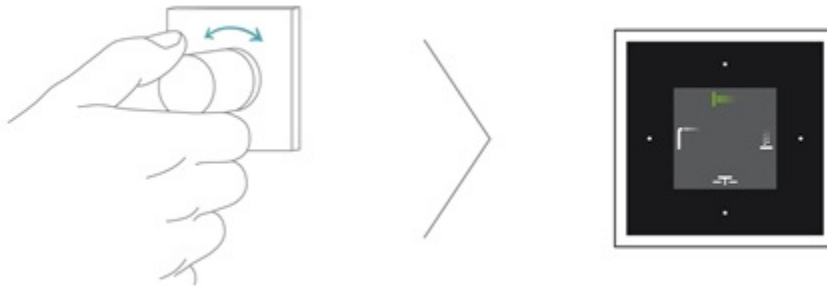


Sleep mode

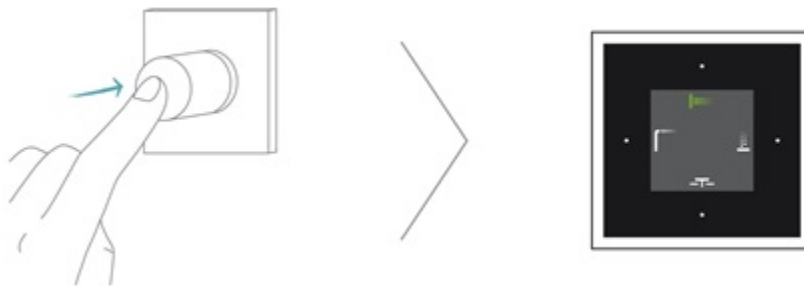


## On/Off

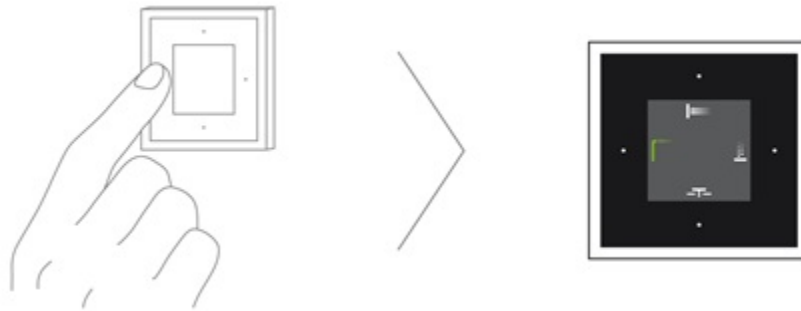
using rotary knob



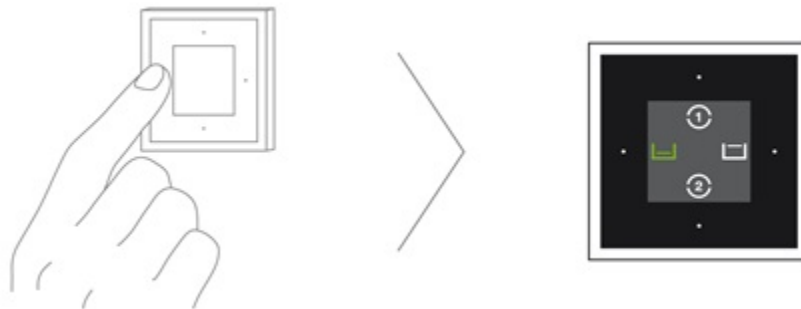
using rotary knob



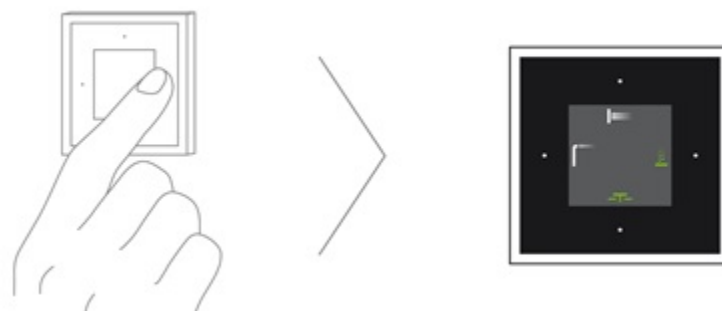
using display button



using display button

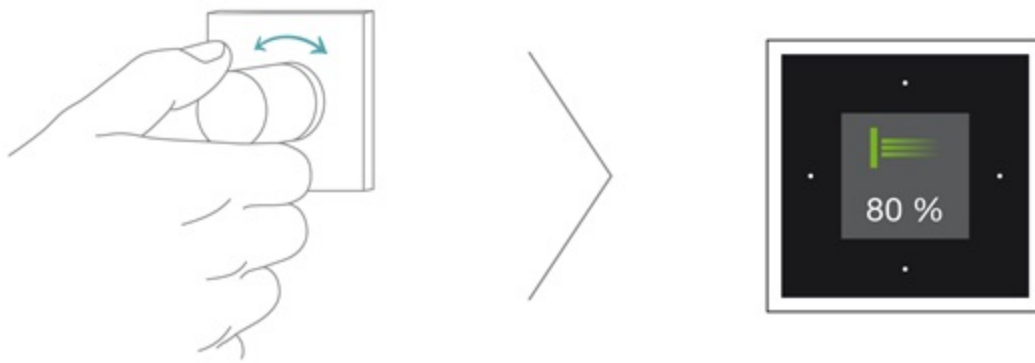


Jet activation

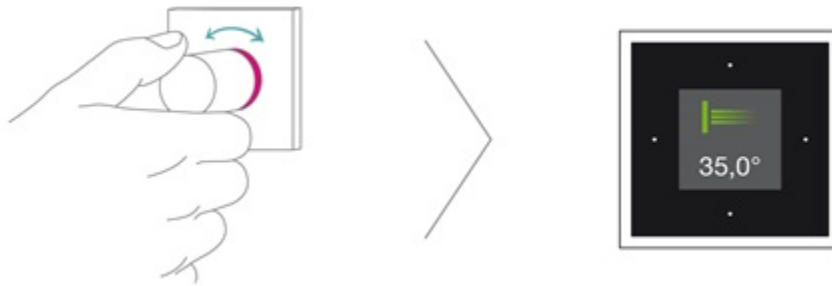


If the jets are activated manually, the strainer waste will first close and water will be let in automatically. As soon as an adequate water level has been reached, the water flow will stop and the jets will start. You can stop the jets by pressing the button a second time.

## Volume adjustment



## Temperature adjustment



## Disable scalding protection system



1 = turn to max

2= push + turn at the same time

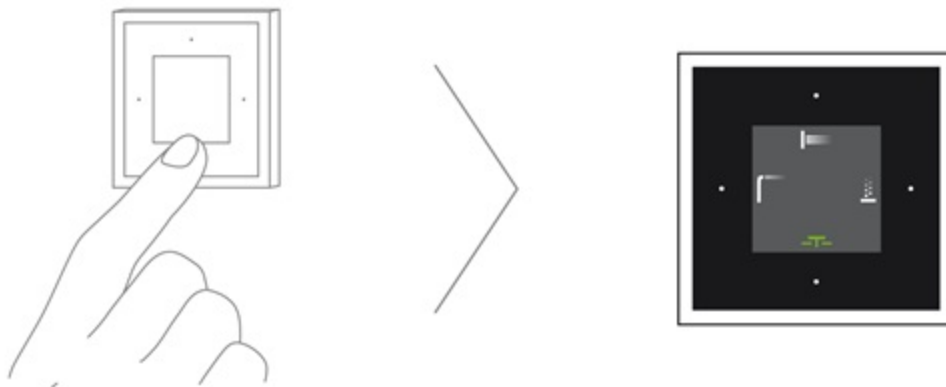


The scald protection system will be re-enabled after 10 minutes.



## Electronic pop-up waste and overflow set

Close / Open



# Scenarios

You can choose between two automatic scenarios:


## 1 Relax

The RELAX scenario stimulates your circulation, while relaxing and warming you. Your feet will initially be dipped in lukewarm, shallow water after which the temperature and water level will rise slowly until, after 15 relaxing minutes, you leave the foot bath, dry your legs and ideally spend a further 10 minutes lying down and relaxing.

## 2 Vitalize

The VITALIZE scenario relieves stress, while also refreshing and stimulating you. Your feet are initially dipped into warm, shallow water after which the four jets start to massage your reflex zones with increasing pressure intensity and fluctuating temperatures. Gradually, a stimulating feeling will flow through your whole body and will remain long after you finish your foot bath. This scenario lasts 5 minutes.

## Starting a scenario

 During a scenario temperature may be changed by +/- 2°C and water volume by +/- 20%. Pressing any rotary knob or display button enables you to terminate a scenario prematurely.

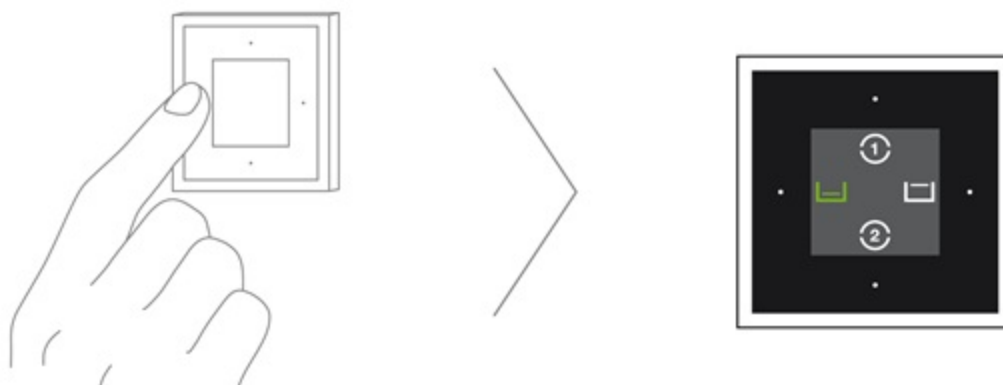


# Comfort Functions

## Automatic filling

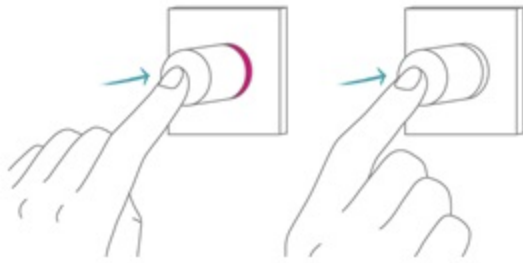
The comfort functions enable you to fill the bath automatically up to a preset depth, either up to your ankles or calves. The default temperature is 38°C.

## Starting a comfort function



## Cleaning

### Key lock



5 sec.



## Service display

If one of the symbols is lit in red for 2 seconds, contact your dealer or the Dornbracht Service Department.



## Waiting display

If a function has been selected but is not yet ready (e.g. the set temperature), the appropriate symbol will flash. It will stop flashing as soon as the function is ready for use.



## Maintenance

We recommend that you have all the components inspected and serviced by your plumber once per year. This maintenance will also include cleaning, checking for leaks, checking the functions and uploading the latest software version. A maintenance contract with an authorised plumber will ensure that your system is inspected regularly.

## Safety deactivation

A safety deactivation system ensures that all active functions are switched off automatically after 30 minutes at the most.

## Disposal

All electronic elements are marked in compliance with European Directive 2002/96/EC on Waste Electrical and Electronic Equipment (WEEE). This Directive provides the framework for the return and recycling of end of life products throughout the EU. In addition to valuable recyclable materials, end of life electrical and electronic appliances also contain harmful substances. These can be harmful to human health and the environment if they are disposed of in the residual non-recyclable waste or if they are not treated correctly. You should therefore never dispose of your waste appliance as non-recyclable waste. Instead, use the collection point established by your local authority to return and recycle electrical and electronic waste. Ensure that you comply with the current regulations in this respect. You must also comply with other national regulations which apply.



If you have any questions, contact the Dornbracht branch nearest you:

Dornbracht UK Ltd.  
Units 8 & 9 Bow Court Fletchworth Gate Coventry CV5 6SP  
Tel. +44(0)2476 717 129, Fax +44(0)2476 718 907  
mail@dornbrachgroup.co.uk, www.dornbracht.com